

2023 annual report to the Community

# Marryatville High School



Marryatville High School number: 817

Partnership: Central East



School principal:

Julie Ferguson

Date of endorsement:

05/02/2024



Government  
of South Australia  
Department for Education

# Context Statement

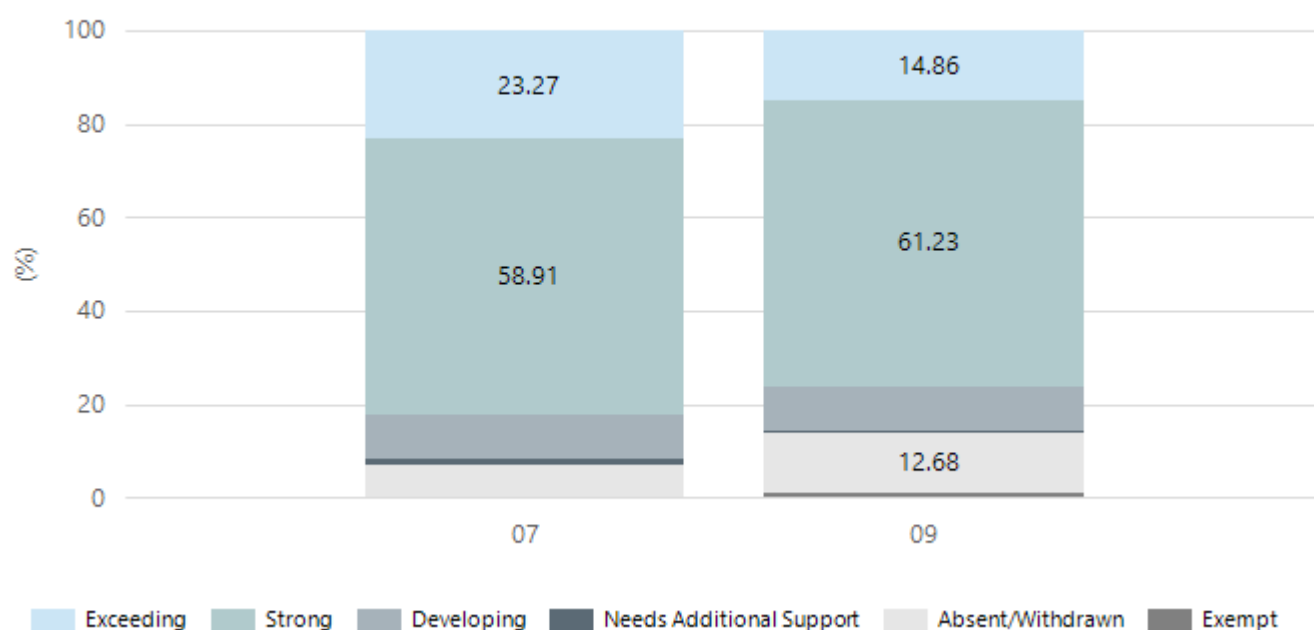
Marryatville High School caters for students from 7-12. At the time of this report, the enrolment in 2023 is 1688. Marryatville High School is classified as Category 6 on the Department for Education Index of Educational Disadvantage. At the time of this report, the school population includes 1% Aboriginal students, 3% students with disabilities, 4% students with English as an additional language or dialect (EALD) funded background. Further information about the school is available on the school's website (including its context statement), as well as the My School website.

## Performance Summary

### NAPLAN Proficiency

In 2023, the Australian Curriculum, Assessment and Reporting Authority (ACARA) - a Commonwealth Independent statutory authority - announced changes to NAPLAN performance reporting. This new way of reporting by ACARA that NAPLAN results from 2023 will not be comparable to previous years. The new approach replaces the previous numerical NAPLAN bands and the national minimum standard.

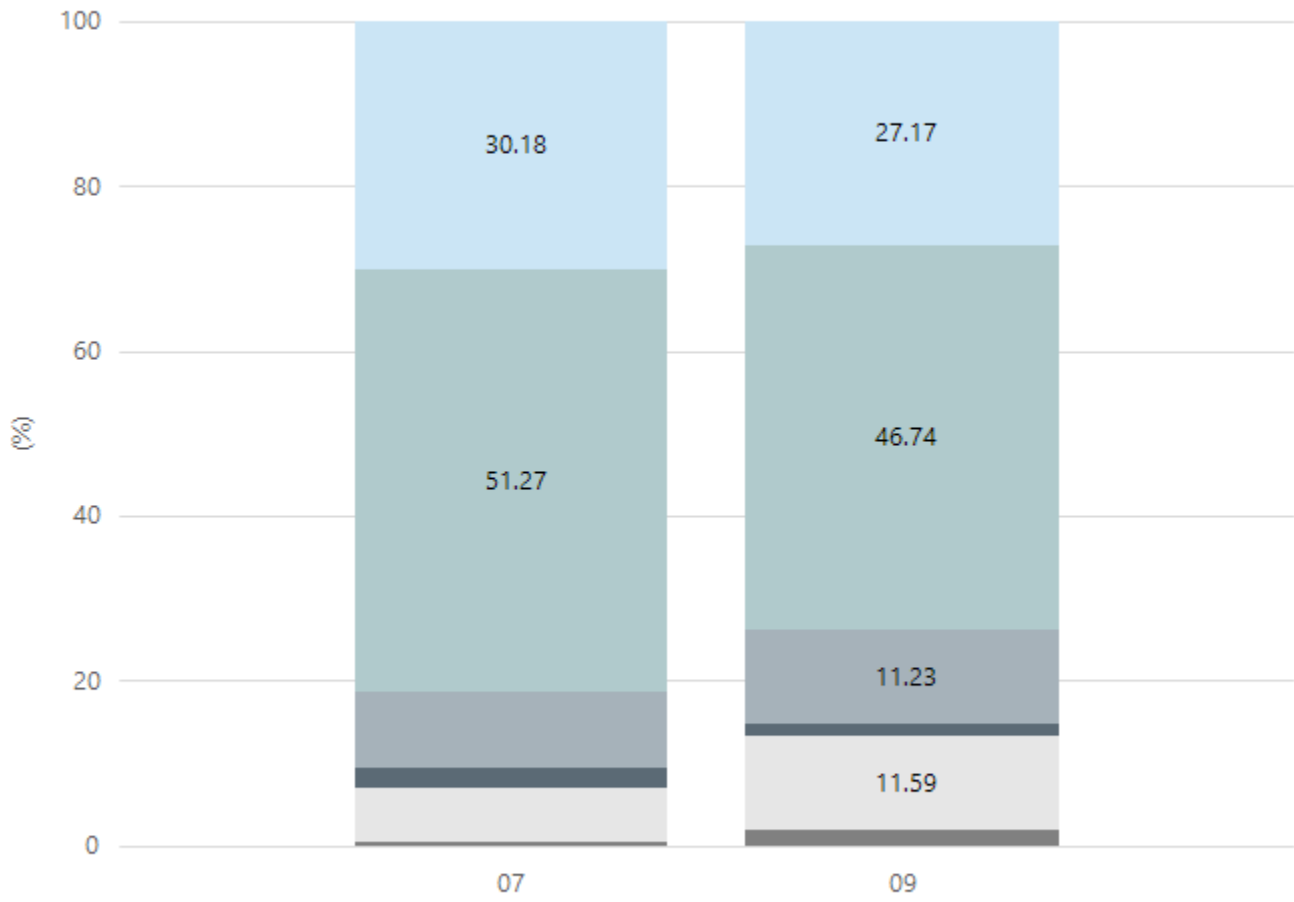
#### Numeracy



Year Level	07	09
Exceeding	64	41
Strong	162	169
Developing	26	26
Needs Additional Support	4	2
Absent/Withdrawn	19	35
Exempt		3
Total	275	276

Data Source: Department for Education Assessment Data Holdings, 2023. When there are less than six students in a cohort, no data is supplied.

## Reading

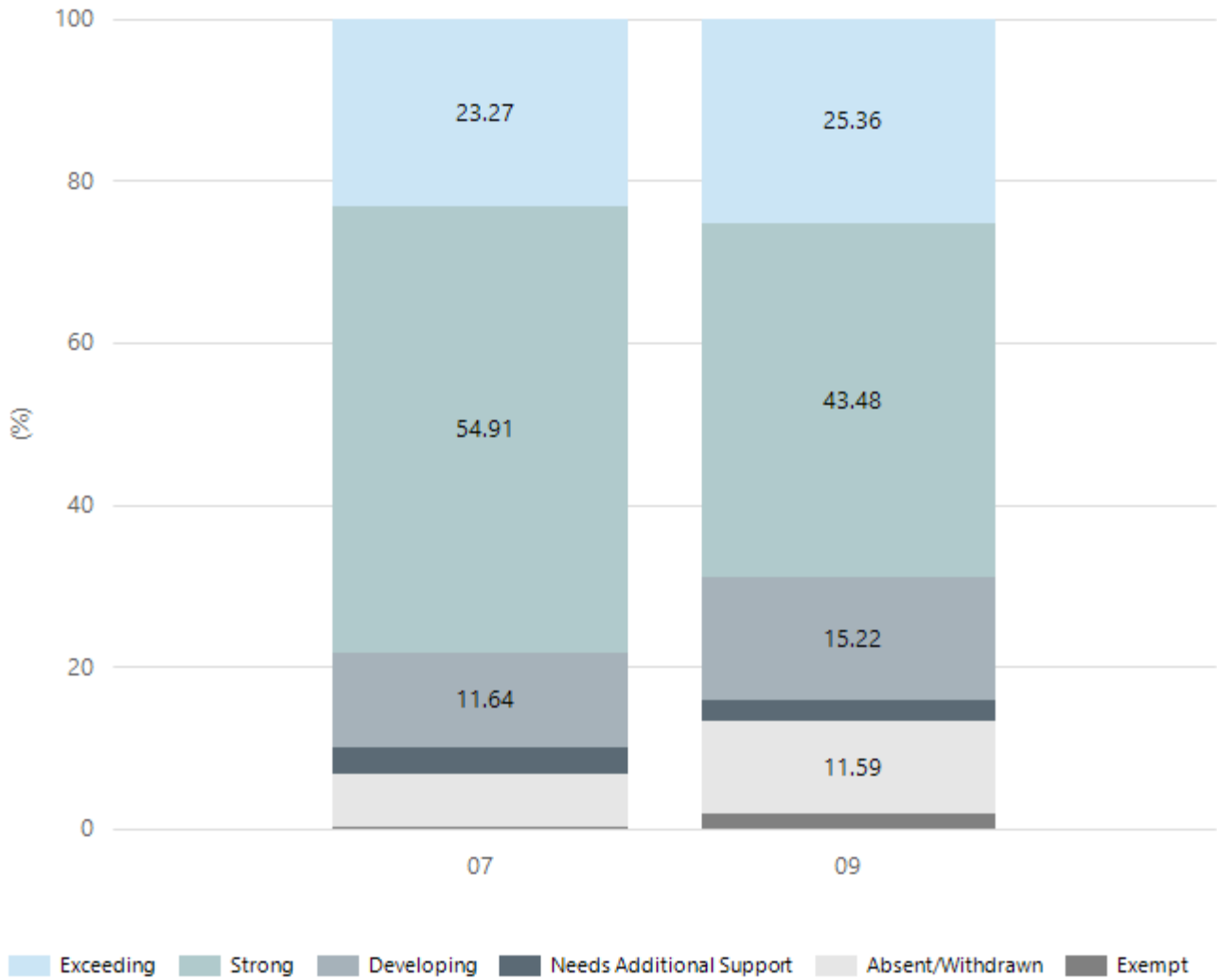


■ Exceeding 
 ■ Strong 
 ■ Developing 
 ■ Needs Additional Support 
 ■ Absent/Withdrawn 
 ■ Exempt

Year Level	07	09
Exceeding	83	75
Strong	141	129
Developing	25	31
Needs Additional Support	7	4
Absent/Withdrawn	18	32
Exempt	1	5
Total	275	276

Data Source: Department for Education Assessment Data Holdings, 2023. When there are less than six students in a cohort, no data is supplied.

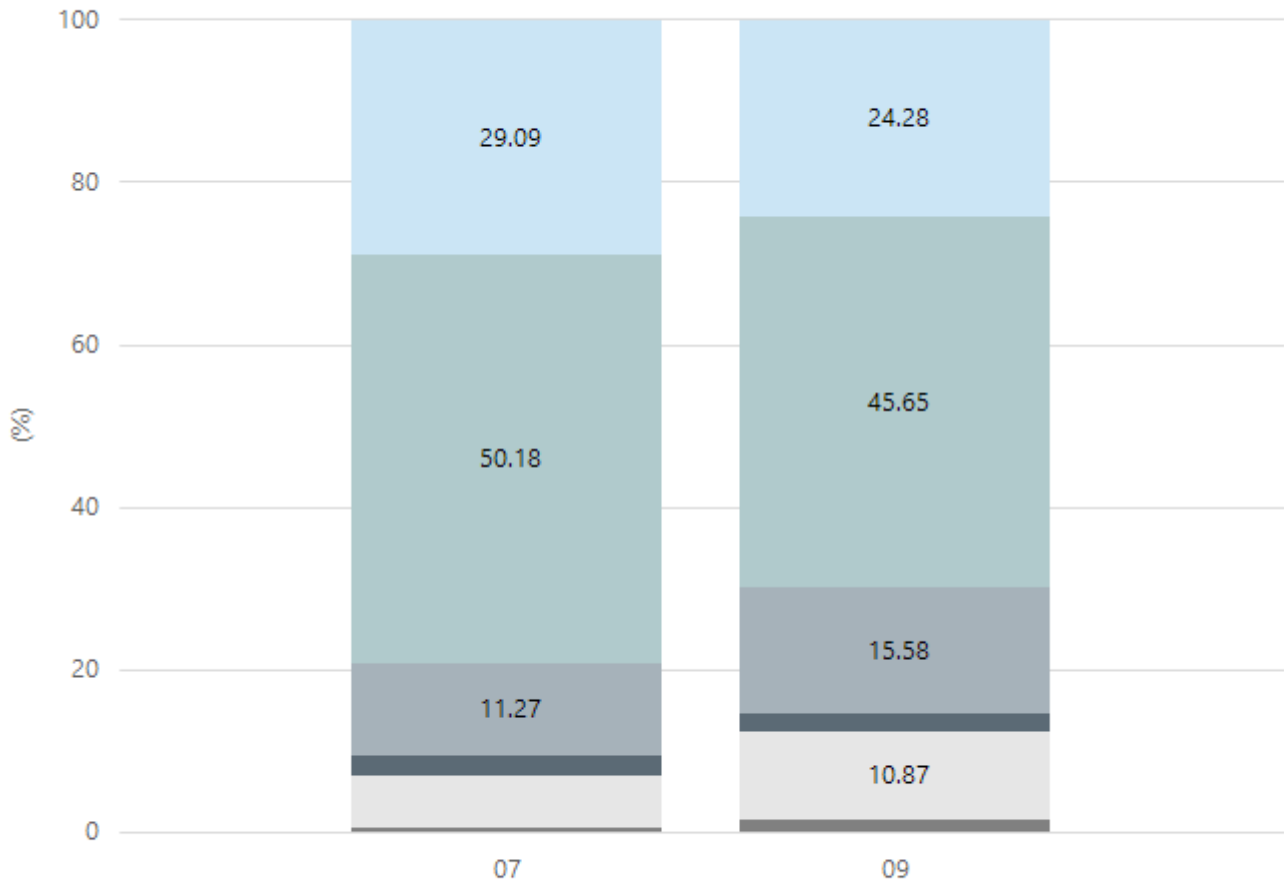
## Writing



Year Level	07	09
Exceeding	64	70
Strong	151	120
Developing	32	42
Needs Additional Support	9	7
Absent/Withdrawn	18	32
Exempt	1	5
Total	275	276

Data Source: Department for Education Assessment Data Holdings, 2023. When there are less than six students in a cohort, no data is supplied.

## Grammar

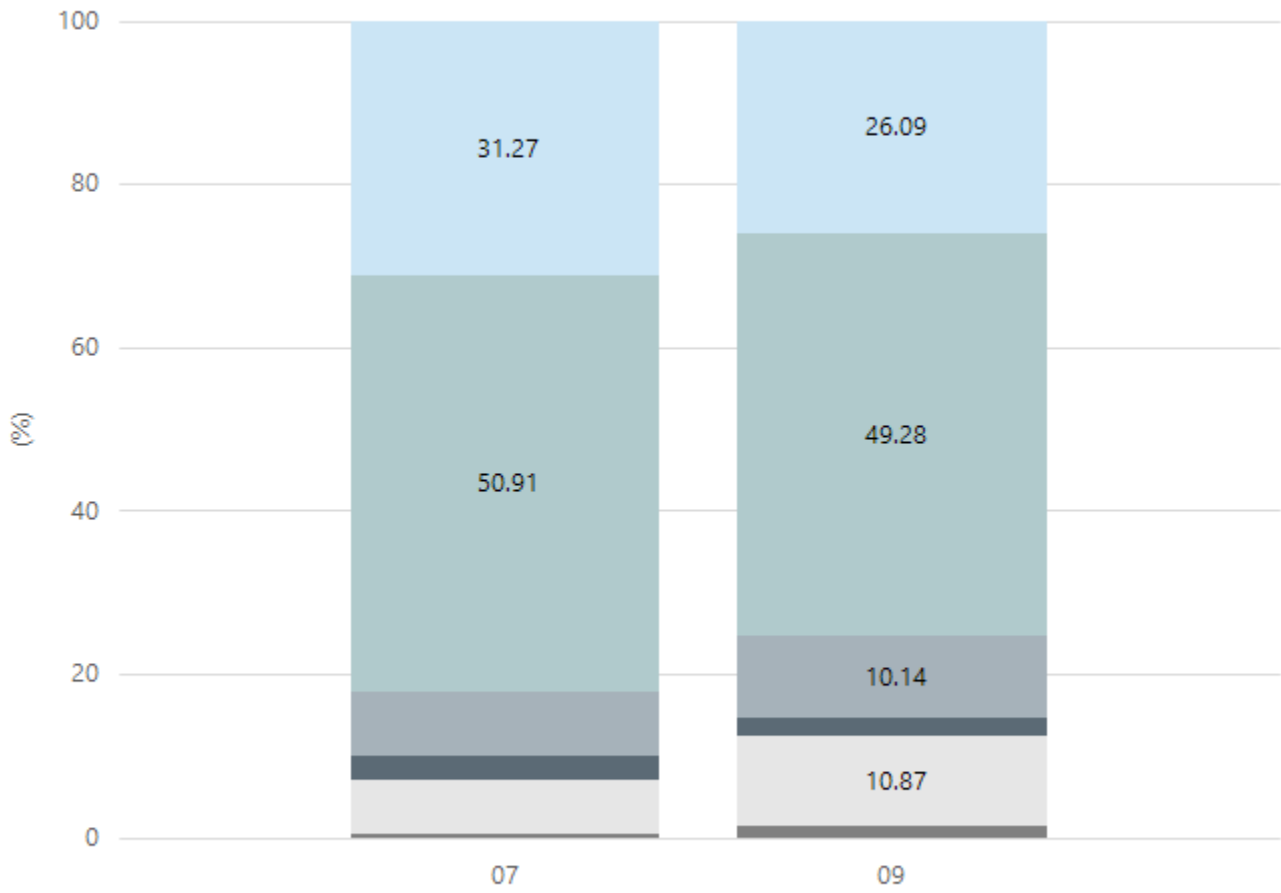


■ Exceeding 
 ■ Strong 
 ■ Developing 
 ■ Needs Additional Support 
 ■ Absent/Withdrawn 
 ■ Exempt

Year Level	07	09
Exceeding	80	67
Strong	138	126
Developing	31	43
Needs Additional Support	7	6
Absent/Withdrawn	18	30
Exempt	1	4
<b>Total</b>	<b>275</b>	<b>276</b>

Data Source: Department for Education Assessment Data Holdings, 2023. When there are less than six students in a cohort, no data is supplied.

## Spelling



Exceeding Strong Developing Needs Additional Support Absent/Withdrawn Exempt

Year Level	07	09
Exceeding	86	72
Strong	140	136
Developing	22	28
Needs Additional Support	8	6
Absent/Withdrawn	18	30
Exempt	1	4
Total	275	276

Data Source: Department for Education Assessment Data Holdings, 2023. When there are less than six students in a cohort, no data is supplied.

# South Australian Certificate of Education - SACE

## SACE Stage 2 Grades - Percentage of grades that are C- or above for attempted SACE subjects (SEA)

2020	2021	2022	2023
91%	90%	90%	99%

Data Source: SACE School Data Reports, as of February 2023 for 2020-2022. 2023 SACE results are School supplied data. When there are less than six students, no data is supplied. Due to rounding of percentages, total results may not add up to 100%.

## SACE Stage 2 Grade Distribution

Grade	2020	2021	2022	2023
A+	5%	6%	7%	8%
A	15%	16%	15%	18%
A-	15%	16%	19%	21%
B+	14%	14%	13%	16%
B	15%	14%	13%	14%
B-	10%	10%	11%	8%
C+	9%	8%	7%	8%
C	6%	4%	3%	4%
C-	2%	2%	1%	1%
D+	1%	1%	1%	0%
D	1%		0%	
D-	0%			
E+			0%	
E-	0%			

Data Source: SACE School Data Reports, as of February 2023 for 2020-2022. 2023 SACE results are School supplied data. When there are less than six students, no data is supplied. Due to rounding of percentages, total results may not add up to 100%.

## SACE Completion - Percentage of completers out of those students who had the potential to complete their SACE in October that year

2020	2021	2022	2023
99%	100%	100%	100%

Data Source: SACE School Data Reports, as of February 2023 for 2020-2022. 2023 SACE results are School supplied data. When there are less than six students, no data is supplied. Due to rounding of percentages, total results may not add up to 100%.

## Year 12 Students undertaking Vocational or Trade Training (VET)

	2021	2022	2023
Percentage of Year 12 students undertaking Vocational Training or Trade Training	10%	13%	15%
Percentage of Year 12 students attaining a Year 12 certificate or equivalent VET qualification	23%	21%	20%

Data Source: School supplied data



# School Attendance

Year Level	2021	2022	2023
Year 07		90.8%	92.2%
Year 08	94.3%	89.5%	91.2%
Year 09	91.6%	89.5%	89.6%
Year 10	99.2%	86.9%	89.5%
Year 11	93.3%	88.1%	90.2%
Year 12	92.3%	86.9%	89.8%
Secondary Other		98.2%	90.3%
Total	94.1%	90.0%	90.4%

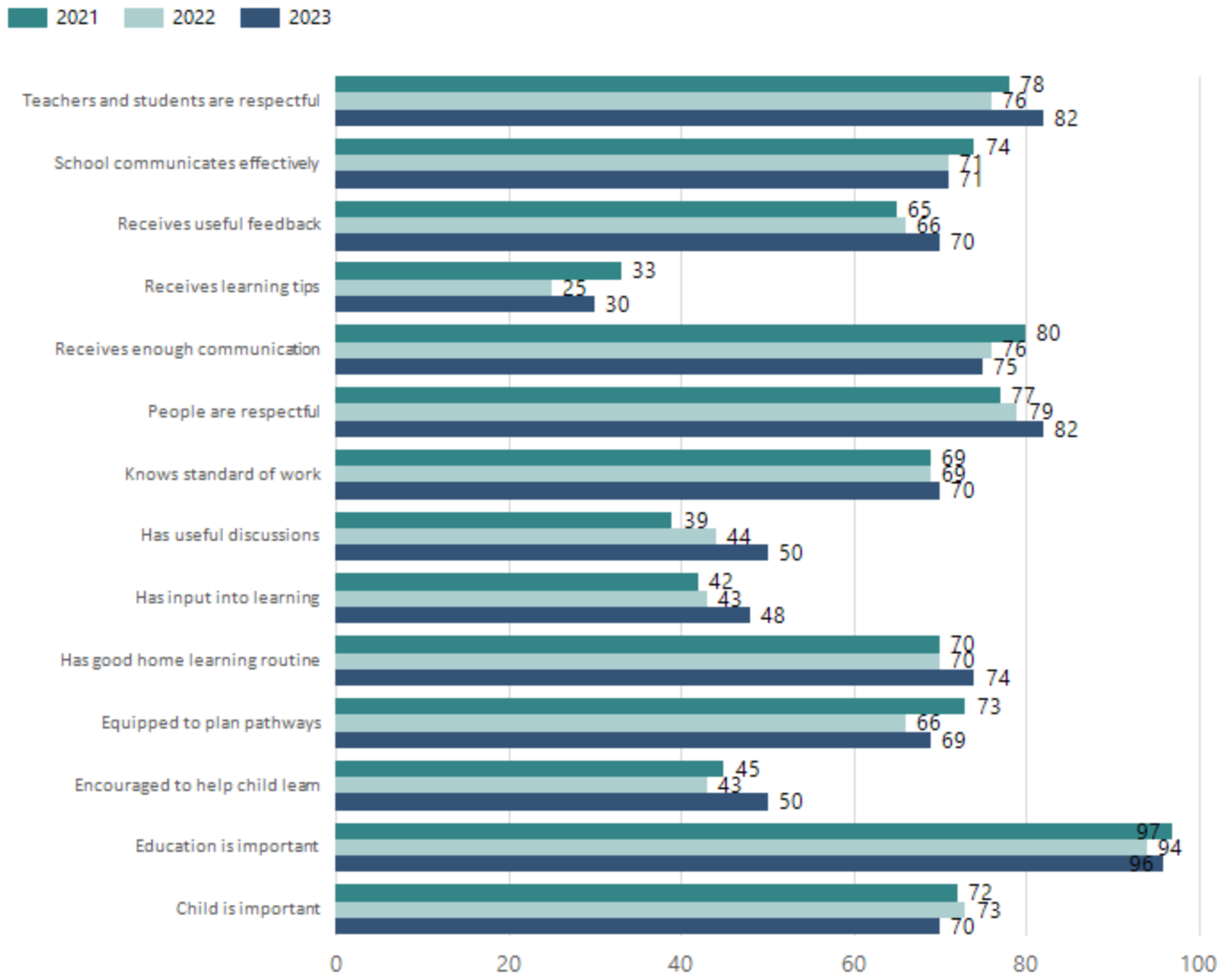
Data Source: Department for Education Attendance Data, Semester 1 Report 2023. A blank cell indicates there were no students enrolled. 'Primary Other' includes students enrolled in specialised education options. 'Secondary Other' includes students who have already spent a year at Year 12 and elected to undertake further study at Year 12.

## Attendance Comment

In South Australia, all children and young people must be in school from 6 years to 16 years old. They must attend a government or non-government school full time. From age 16 to 17 however, young people must attend school or an approved learning program (such as an apprenticeship, traineeship, accredited course or university). Schools and parents must encourage and support students to come to school every day. Parents and caregivers must make sure their child is enrolled in a school, and attends school all day and everyday it is open, unless a child is sick or has an approved exemption. Teachers and leaders actively follow up when a student misses school, including recording all absences and non-attendance. All schools in South Australia have local attendance procedures governed under the Education and Children's Services Regulations 2020.

# Parent Opinion Survey Results

Proportion of agree/strongly agree response(%)



Data Source: 2023 Department for Education Parent Opinions Survey, Term 3 2023.

# Governing Council Report

The Parent Representatives of the 2023 Governing Council were elected at the AGM held in November 2022. The second Community Member position, which had been vacant for a long period of time was formally filled at the March 2023 meeting. Staff and the School Captains rounded out the 17-person Governing Council, meeting on 7 occasions during the year. The School Captains provided regular insight into student life and briefed the Governing Council on a range of student driven initiatives to foster positive school values and strong peer connections.

The school community was shocked by a pedestrian accident involving Marryatville High School students on Kensington Road on the morning of 21 March. The Governing Council responded by advocating for improved safety in the streets surrounding the school. This included working with the Mayor and staff from the City of Norwood, Payneham and St Peters and seeking support from various Members of Parliament. Consequently significant upgrades to the school surrounds included:

- the installation of advanced signals ahead signage
- pedestrian pavement markings painted on the road
- wrapping of traffic signal poles with red and white tape
- installation of target boards on the traffic signals to allow the lights to better stand out
- installation of red hoop signs on the footpaths
- relocation of the stop bar to six metres from the cross walk
- new stop bar detector loops installed in the pavement that will enable the capture of date from the red light camera

The Governing Council thank the local Member for Bragg for his advocacy, and Minister for Police, Emergency and Correctional Services for delivering on his commitment to improve pedestrian safety for students.

In Term 3 the Principal, Mr John Tiver John resigned from the Department for Education to take up an alternate employment opportunity. John was instrumental in seeing the school thrive during his tenure and the Governing Council acknowledged is significant leadership, support and knowledge.

To meet 2023 obligations the Governing Council also:

- adopted the school's budget, financial statements and annual reports
- supported the outcomes of the uniform provider tender process
- endorsed policies relating to Mobile phones, Attendance, Debt collection, Communication, and compliments, concerns and complaints
- updated its Standing Orders for meeting procedures
- proposed to not increase the Materials and Services charge for 2024

Chairperson

Marryatville High School Governing Council

## Intended Destination

Leave Reason	Number	%
NG - ATTENDING NON-GOV SCHOOL IN SA	8	7.0%
OV - LEFT SA FOR OVERSEAS	61	56.0%
QL - LEFT SA FOR QLD	6	6.0%
TG - TRANSFERRED TO SA GOVERNMENT SCHOOL	21	19.0%
VI - LEFT SA FOR VIC	4	4.0%

Data Source: Department for Education Destination Data Report, 2023. Data extract term 3 2023. Data shows recorded destinations for students that left the school in the previous year. Data is uploaded by schools in term 3 and may not reflect final or total figures at time of report creation.

# Highest Qualifications held by the teaching workforce and workforce composition

All teachers at this school are qualified and registered with the SA Teachers Registration Board.

Qualification Level	Number of Qualifications
Bachelor's degrees or Diplomas	55
Postgraduate Qualifications	76

Data Source: Data extracted from Mandatory Workforce Information Collections as on the last pay date of June 2023. As self-reported by staff in the system.

Please note: Data includes staff who are Actively employed and on extended paid leave. Please note only the highest qualification of the Teaching staff is reported. Excludes any number of other certifications earned.

## Workforce composition including indigenous staff

	Teaching Staff		Non-Teaching Staff	
	Indigenous	Non-Indigenous	Indigenous	Non-Indigenous
Full-Time Equivalents	0.0	123.1	0.8	29.5
Persons	0.0	133.0	1.0	33.0

Data Source: Data extracted from Mandatory Workforce Information Collection as on the last pay date of June 2023.

Please note: Data includes staff who are actively employed and on extended paid leave. "Indigenous category" is self-reported by staff in the system.

## Financial Statement

Funding Source	Amount
Grants: State	\$19,007,292
Grants: Commonwealth	\$2,800
Parent Contributions	\$2,095,930
Fund Raising	\$42,875
Other	\$0

Data Source: School supplied data.