

**JANUARY 2025**



# Marryatville High School

## Our Uniform

Only the following options are to be worn all year round.  
No puffer jackets, quilted jackets, denim jackets etc.



Skirt, dress or shorts to be **no shorter** than fingertips when standing.



All black, enclosed leather shoes. No canvas or fabric shoes.  
No branding on socks.



## HPE Uniform

HPE uniform may be worn to school if HPE is the first lesson of the day, and worn home if last lesson of the day.

**HPE uniform cannot be worn all day.**



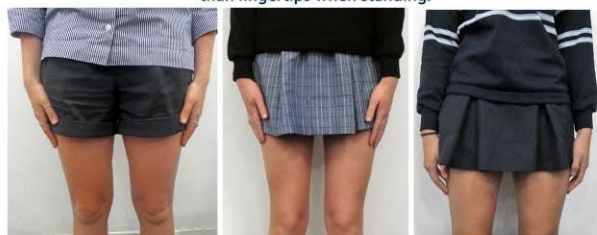
No canvas or fabric shoes/sneakers.  
No branding on socks.



No long sleeves **under** school uniform



Skirt, dress or shorts to be **no shorter** than fingertips when standing.



**JANUARY 2025**



# Marryatville High School

## Our Uniform

### Music Performance Uniform

- Special Music students, senior music students and students in extra-curricular music ensembles are required to purchase the Music performance uniform.
- Extra-curricular includes any ensemble outside normal school hours (after school and lunchtimes).
- Elective Music students attending the Elder Hall Concert in term 4 who are not in any extra-curricular ensembles, are NOT required to purchase the performance uniform.



Dark navy wool knit vest with school logo.



White long sleeved, business shirt (no logo).



Plain dark navy trousers, school set only.



Polished black leather lace up school shoes, no high heels, platforms, canvas sneaker style shoes or boots.



Navy blue tie with skye/white stripe and logo. Long or short navy or black socks must cover the ankle bone.



No canvas or fabric shoes/sneakers.  
No branding on socks.

