

Welcome

The South Australian Certificate of Education (SACE) is an internationally recognised qualification for life.

The SACE is designed to help your child develop capabilities and provide skills and knowledge to live, work, and participate successfully in an ever changing society.

It will offer your child the flexibility to choose their subjects and complete the qualification in a timeframe that suits them and their lifestyle.

Your child will become a successful learner, a confident and creative individual who is an active and informed citizen ready to succeed in further education, training, or the workforce.

LEARNING
AT THE
PACE OF
CHANGE

Exploring their capabilities

Your child will learn at the pace of change with 7 capabilities that equip them to live and work successfully in the 21st century.



LITERACY

We develop skills to understand and interpret a variety of texts and people in a range of different situations and countries.



NUMERACY

We gain knowledge to use Mathematics to effectively interpret information and solve problems.



INFORMATION AND COMMUNICATION TECHNOLOGY

We learn how to use current and emerging technologies and understand their impact on society and the workplace.



CRITICAL AND CREATIVE THINKING

We use critical and creative thinking skills to identify and analyse complex topics and questions.



PERSONAL AND SOCIAL

We are confident, self-disciplined and independent. We can work in a team and are resilient to deal with challenging situations.



ETHICAL UNDERSTANDING

We develop a deep understanding of ethical issues and how to manage them.



INTERCULTURAL UNDERSTANDING

We appreciate and respect other people's social and cultural backgrounds and learn about the diversity of our nation and the world.





= 200 credits

Your child's SACE journey

The SACE is flexible and students' schedules may differ depending on their school. To complete the qualification, your child will need to attain **200 credits** from a selection of Stage 1 and Stage 2 subjects. A 10-credit subject is usually one semester of study, and a 20-credit subject is usually over two semesters.

COMPULSORY SUBJECTS

50 credits

- The Personal Learning Plan (PLP) (10 credits)
- Literacy requirement (20 credits) demonstrated from a range of English subjects at Stage 1 or Stage 2
- Numeracy requirement (10 credits) demonstrated from a range of Mathematics subjects at Stage 1 or Stage 2
- The Research Project (10 credits)



STUDENT SELECTED SUBJECTS

90 credits

Your child chooses and successfully completes a selection of Stage 1 and Stage 2 subjects, recognised VET courses, or community learning.



60 credits

Your child chooses and successfully completes a selection of Stage 2 or VET subjects worth at least 60 credits in total.

Stage 2 subjects are externally assessed by the SACE Board of South Australia.

The SACE is flexible and students' schedules may differ depending on their school. The majority of students in South Australia will start their journey with the **Personal Learning Plan in Year 10**, their selection of **Stage 1 subjects in Year 11** (including the compulsory Maths and English choices), and their selection of **Stage 2 subjects in Year 12** (including the Research Project). To view all subjects offered by SACE visit sace.sa.edu.au

EXAMPLE OF ACHIEVING A MINIMUM OF 200 CREDITS

50 credits - compulsory

- Personal Learning Plan** (10 credits)
- Stage 1** General Mathematics (10 credits – one semester)
- Stage 1** Essential English (20 credits)
- Stage 2** Research Project (10 credits)

Min. 90 credits

- Stage 1** Biology (20 credits)
- Stage 1** Italian continuers (20 credits)
- Stage 1** Food and Hospitality (20 credits)
- Stage 2** Food and Hospitality (20 credits)
- Stage 1** VET: Certificate II in Food Processing (min. 40 credits)

Min. 60 credits

- Stage 2** Biology (20 credits)
- Stage 2** Italian continuers (20 credits)
- Stage 2** Essential English (20 credits)

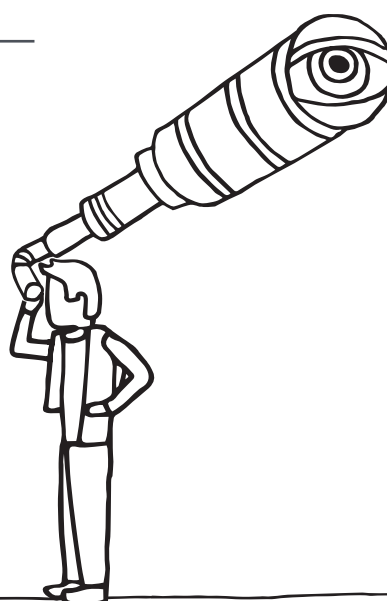


To view all subjects offered in the SACE visit sace.sa.edu.au

How it has changed

The SACE has evolved to provide your child with **more flexibility** to choose subjects that reflect their interests, skills, and career goals, using a combination of SACE subjects, vocational education and training (VET), community learning, university, and TAFE studies.

SACE subjects are made up of investigations, performances, and other assessment tasks to demonstrate students' skills, knowledge, and personal capabilities throughout the year. Some subjects will have an end-of-year exam **worth a maximum of 30%** of the overall grade.



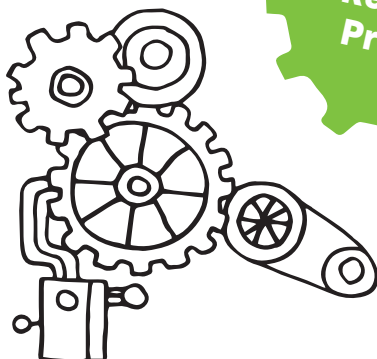
What is the Personal Learning Plan (PLP)?

Your child's SACE journey starts with the Personal Learning Plan (PLP).

- a **10-credit Stage 1** subject
- encourages your child to think about their choices
- identifies their interests and strengths
- sets personal and learning goals
- looks at their future options and considers different career paths
- creates a **solid foundation for Year 11 and Year 12 studies**
- helps identify what subjects they might like to study
- participate in courses and activities outside school that will help them achieve their goals

Your child will **need to achieve at least a C grade**.

What is the Research Project?



The Research Project is a compulsory Stage 2 subject usually completed in Year 12, however, some schools offer the subject to students in Year 11. It is a one semester (10 credit) subject.

The Research Project is an important opportunity for your child to develop skills relevant to their future beyond school.

Your child will research a topic question in-depth that really interests them and will explore their interest area using their creativity and initiative, and develop the research, presentation and project management skills they will need to be successful at university, further study, work and life.

Students will develop the ability to analyse information, make judgement, and evaluate.

What kind of research questions do students investigate?

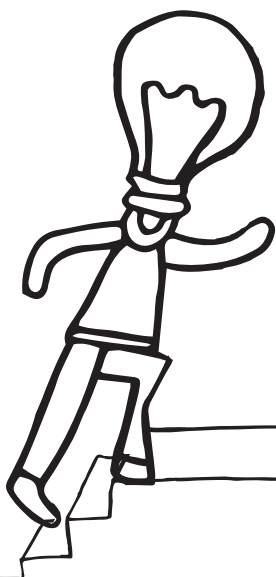
- 'How the media influences the Australian asylum seeker debate?'
- 'To what extent does the architectural redevelopment of the laneways in Adelaide contribute to making a more vibrant city?'
- 'What is the best method for upholstering a chair?'
- 'What is the future of the southern hairy-nosed wombat?'

If your child can't think of a topic, try getting them to think about:

- a topic they are interested in, but haven't had the chance to investigate
- their interests outside school
- their future plans and ambitions.

Students will need to **achieve at least a C- grade** in the Research Project to complete the SACE.

More information is available at sace.sa.edu.au/research-project



What kind of learner is your child?

The SACE is flexible, and caters for learning both in and outside school.

Students can combine study and part-time work, a traineeship or school-based apprenticeship.

Students can receive credits for a wide range of activities and training:

- SACE subjects
- Vocational education and training (VET)
- Community learning
- University and TAFE studies

VET options are available at both Stage 1 and Stage 2 and include a wide range of industry areas, including construction, automotive, electro technology, hospitality, community services, health and information technology.

You can find a range of Stage 1 and 2 subjects, vocational education and training (VET) courses, plus other study options at sace.sa.edu.au/studying/subjects



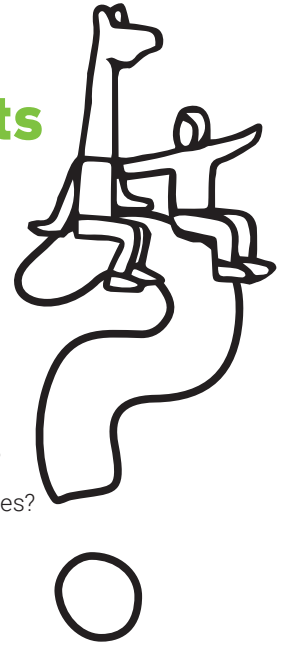
Use our SACE planner (page 08) to help your child with their subject selection.

When choosing Stage 2 subjects, your child should keep in mind any subjects that are required for the university courses they are interested in.

Helping them choose subjects

Questions for your child to ask themselves:

- What am I interested in?
- What am I good at?
- What sort of job, or types of work, will help me follow my interests?
- What subjects do I need to study to follow my chosen career pathway?
- What do I hope to gain from my studies?
- What have I learned during my Personal Learning Plan (PLP)?



Encourage them to try and choose subjects that will open doors to a range of careers within their area of interest.

This will give them greater flexibility if they want to change or modify their choice in the future.

You can find out more about credits, choosing subjects, and see the full list of Stage 1 and Stage 2 subjects at sace.sa.edu.au/studying/subjects

Making sure it's fair

Student work in the SACE is assessed through the use of performance standards.

SACE subjects are assessed by your school at Stage 1. The responsibility for assessment at Stage 2 is shared between schools and the SACE Board, through moderation and marking processes.

Teachers and assessors use the performance standards to decide how well a student has demonstrated their learning.

The performance standards, which are provided in each subject outline, describe the level of achievement required to obtain a grade:

- from A to E for Stage 1
- from A+ to E- for Stage 2.

During your child's journey

Special provisions are reasonable adjustments in assessment that positively enable eligible students to demonstrate the required knowledge, skills, and standards of Stage 1 and Stage 2 subjects.

The SACE Board and schools work in partnership to ensure special provisions are available to eligible students for both Stage 1 and Stage 2 school assessment and Stage 2 external assessment.

Special provisions may be granted on a short-term or long-term basis, depending on the grounds for eligibility and a student's particular circumstances.

sace.sa.edu.au/special-provisions

Modified Subjects

The SACE Board offers Modified Subjects at both Stage 1 and 2 for eligible students with identified significant disabilities.

A student studying Modified Subjects will gain credits towards the SACE but is not graded for the subject. Instead their successful achievement will be recorded as 'Completed'.

Modified Subjects will be listed on your child's certificate.

View more information at sace.sa.edu.au/modified-subjects

The last step

At the end of Stage 2, your child will receive their final results for all SACE subjects completed. These grades are available in Students Online, which is accessible from the SACE website.

On the same day, the South Australian Tertiary Admissions Centre (SATAC) will provide eligible students with:

- an Australian Tertiary Entrance Rank (ATAR) which they can use to apply for university, and/or
- a TAFE SA Selection Score.

After your child's SACE journey

Achieving the SACE is important if your child wants to study at TAFE or university, but there are also other pathways after secondary school. The SACE also sets the foundation to move from high school to employment.

University pathways

Successful completion of the SACE is the most common way for students to gain entry to local and international universities.

To be eligible to apply for university, South Australian students must have:

- completed the SACE with at least 90 credits at Stage 2
- gained a university aggregate and an ATAR (issued by SATAC)
- met any prerequisite subject requirements for their chosen university course
- complied with rules regarding subject combinations and counting restrictions

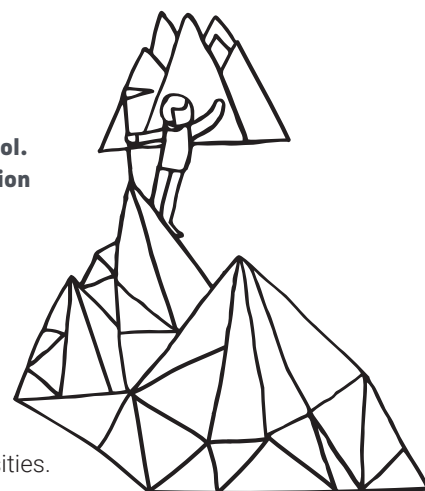
Application for entry to university courses is made through the South Australian Tertiary Admissions Centre (SATAC). More information is available in the SATAC booklet and at satac.edu.au

TAFE pathways

TAFE SA offers courses to prepare your child for employment in professional, para-professional, technical, and trade careers.

Completing the SACE will provide your child with a TAFE Selection Score that can be used to enter most TAFE SA courses. Entry requirements may vary depending on the level of the qualification.

Details of these requirements and a list of all the courses offered by TAFE can be found at tafesa.edu.au





What is an ATAR?

An **Australian Tertiary Admissions Rank (ATAR)**

is issued by SATAC and used by universities to select students for courses.

It measures a student's overall achievement compared with all students nationally and ranges from 0 to 99.95

The score is calculated from your child's 90-credit, Stage 2 results.

For more information about the ATAR (including scaling of scores), go to satac.edu.au

Employment and training

VET courses can count towards your child's SACE at both Stage 1 and Stage 2. This means they can be working towards, or may even have gained, a VET qualification by the time they finish the SACE – giving them a head start on their career and employment.

After completing their SACE your child can continue with their chosen pathway or start a new one, choosing from a wide range of industry areas, including construction, automotive, electro technology, hospitality, community services, health and information technology.

More information is available at skills.sa.gov.au/careers-jobs



Need more information

Your school

Your school's SACE coordinator, teachers, and other school leaders are here to help and can:

- offer advice and information on the subjects being offered
- help your child select subjects that suit their interests and plans
- advise your child about the best subjects to take to prepare them for tertiary education or employment
- advise your child on vocational education and training (VET) options available to them, through school or a registered training organisation (RTO).

The SACE Board

If you are looking for ways to further support your child through their SACE journey, more information can be found under 'Studying the SACE' at sace.sa.edu.au/studying

Alternatively contact the SACE Board at

60 Greenhill Road, Wayville
South Australia, 5034
T 08 8115 4700

sace.info@sa.gov.au



Government of South Australia



South Australian Certificate of Education

The SACE planner

Personal Learning Plan = 10 credits

Credits

10

Literacy = 20 credits *Choose from a range of English subjects or courses*

Subtotal 10

Numeracy = 10 credits *Choose from a range of mathematics subjects or courses*

Subtotal 30

Stage 2 subjects or courses = 60 credits

Choose from a range of Stage 2 subjects and courses

Research Project = 10 credits

10

Subtotal 70





Additional choices = 90 credits

Choose from a range of Stage 1 and Stage 2 subjects and courses

Subtotal 90

To gain the SACE, you must earn 200 credits

Total 200

	Compulsory Stage 1	Students must achieve a C grade or higher for Stage 1 requirements and a C- or higher for Stage 2 requirements to complete the SACE.
	Compulsory Stage 1 and Stage 2	
	Compulsory Stage 2	
	Choice of subjects and/or courses (Stage 1 and/or 2)	Students must achieve a grade or equivalent for subjects and/or courses selected.